

# Esquema de Conexión

# Panel de Audio

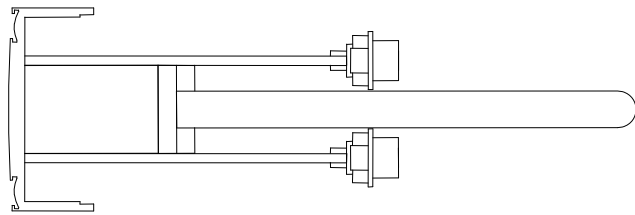
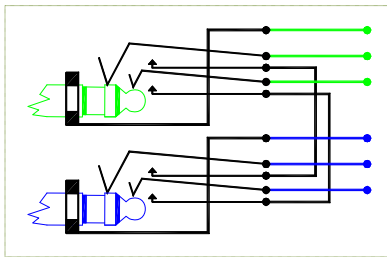
Bantam D25 N

Pág. 1

FECHA: 28-04-11 ED.2

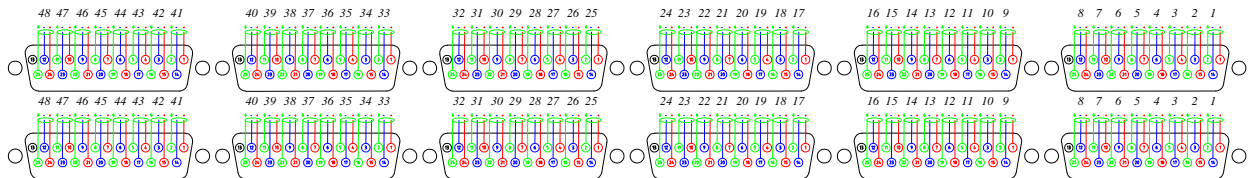
## Configuración: Normalizado

Normalizado



## Configuración Sub-D-25

### Vista Trasera: Sub-D-25 Hembra



### Sub-D-25 Macho (Soldaduras)

